



22'  
COUPLES  
COUNTERSTRIKE  
SERIES

## BRINGING SELF-SUSTAINABILITY TO A NEW LEVEL

Kokoda Caravans are Melbourne made and Australian owned.  
Begin your adventure with a Kokoda.

# COUNTERSTRIKE SERIES COUNTERSTRIKE C220 PRE-LAUNCH BROCHURE



SLEEPS UP TO 2  
RECLINING  
BEDS



FULL ENSUITE  
SHOWER/ TOILET



KITCHEN  
PORTABLE  
INDUCTION



FRIDGE  
INDOOR & SLIDEOUT  
OUTDOOR FRIDGE



BATTERIES  
51v LITHIUM  
BATTERIES



LAUNDRY  
LAUNDRY CHUTE &  
WASHING MACHINE



SOLAR  
MASSIVE SOLAR  
CAPABILITY WITH  
OPTIONAL SLIDE-OUT  
SOLAR PANELS

[WWW.KOKODACARAVANS.COM.AU](http://WWW.KOKODACARAVANS.COM.AU)



## INTRODUCING OUR NEW COUNTERSTRIKE SERIES

The Counterstrike Series has been a labour of love, meticulously and thoughtfully designed by our clever adventurers who have decades of experience camping in the most difficult yet amazing terrain. We know what you want because we want it too.

This new series is tough on the outside, and luxurious designed on the inside. Built for durability, capability and an almost fully self-sustainable off-grid camping experience that's not been seen before on Australian roads (or off them).

It's an electric range built right here in Melbourne, in Kokoda's Very Own Factory!

Packed full of new features that we guarantee will have you as excited as we are!

Internally, we've covered every thoughtful area which includes an ergonomically designed reclining beds, soft close doors/drawers, a dual rubbish bin drawer and a first-of-its kind laundry chute. Ambient strip lighting and stunningly sophisticated interior colour selections will have you feeling like you're in a 5 Star hotel no matter where you camp.

### TECHNICAL SPECIFICATIONS

Body Length	22'
External Length	9000*
Tare (Approx KG)	2980-3180kg*
Ball at Tare (Approx KG)	240kg*
ATM (KG)	3500-3900kg
Payload (Approx KG)	520-920kg*
Internal Height	2000
External Height	3180mm

*\*Please Note: This van is currently in build & these specifications are an estimate.*

*The Counterstrike Series is currently in production & the design is rapidly improving, please note some items may be changed.*



**CALL 1800 577 430 OR EMAIL ENQUIRIES@KOKODACARAVANS.COM.AU**



# COUNTERSTRIKE C220 SPECIFICATIONS

INTERNAL	
Bed	Each Side Adjustable Queen Bed (Electric)
Mattress	Foam Contoured Mattress to enable more comfort and better support
Toilet	Cassette with toilet roll holder
Shower	ABS with towel hooks to hold 4x towels
Ceramic Basin	White (Ensuite)
Taps	Flick Mixer with Pull down Vegetable Sprayer
Master Robe	Besides Queen Bed with Hanging Rail
Niche	Secret Niche under benchtop with 240vIt DPP & USB / 12vIt Socket (Both Sides)
Mirror	Wall Mounted (Ensuite)
Overhead Cupboards	Kitchen, Lounge, Ensuite & Master
Magazine Pocket Holder	Medium
Drawers	Titus Tekform Runners
Bench Top	Laminate with Waterfall Edge (Square Edge)
Pantry	Half (Slide-Out) Pantry
Cupboard Doors	Light Weight & UV Resistant
Handles	Rectangle Push Button
Overhead Handles	Hidden
Door	Dometic Triple Lock with sep Security Screen with Built in Blind
Floor Vinyl	Durable Modern Design with Protective Coating
Windows	Double-Glazed

SEATING	
Club Lounge	Club Lounge with Telescopic Drop Down Table
Upholstery	Vinyl Leather

APPLIANCES	
Fans	12v Fans, 1x per person Bed and 1x at Seating
Range Hood	Sphere Recessed
Internal Fridge / Freezer	Thetford 274 Litre 2 way
External Fridge / Freezer	80 Litre EvaCool Fridge / Freezer installed in Front Box
Hot Water Service	20 Litre Electric
Microwave	240vIt
TV & Bracket	32" Smart TV with 2 Arm Mount
Air Conditioner	Truma Aventa
Stereo	2x Portable Bluetooth speakers that can play simultaneously
Cooktop	Portable Induction Cooktop 1 internal & 1 external
Washing Machine	3.5 Litre Front Loader

PLUMBING	
Shower Rail	Adjustable
Sink	Single Bowl
Sink Tap	With Retractable Hose
Water Tanks	2 x 110Ltr
Tank Fillers	Fast Fill Points
Tap	On A-Frame
Grey Water	40 Litre Portable Bladder

## Our new Counterstrike Series is going to blow you away!

This range is innovative and built for truly long term off-grid camping experiences. A durable sandwich foam construction provides peace of mind and reliable insulation. This fully electric van has features we guarantee you have not seen before.

Designed to be almost fully self-sustainable with our innovative option to upgrade to the "Take Charge" solar panel system that doubles your solar intake with a simple slide out via the click of a button. Auto-levelling from your mobile phone, rear recovery points, rear departure angles for the tightest spots. Further features include our under chassis and outside guards, fast fill system for our standard 2x110ltr tanks, honeycomb composite floor and a 80ltr Evacool slide out fridge. Raptor Coated chassis and front/rear Counterstrike Box, both featuring exceptional storage capabilities and 17" Mickey Thompson tyres will have everyone turning their heads to get a second look.

### INTERNAL ELECTRICAL

Lighting	LED Down Lights
Power Points	240vlt DPP (Master Bed, Lounge, Kitchen, Ensuite)
Reading Light with USB Port	1 Per Persons Bed & 2 at Lounge
Invertor	5000w Invertor Charger
Water Tank Guage	
SOG Toilet Fan	with External Carbon Filter

### EXTERNAL ELECTRICAL

Light	4 x LED White / Amber Bug Lights
Light	1 x LED White / Amber Bug Light above External Kitchen
Light	Water Proof with Switch - Tunnel Boot
Light	LED Door Handle
Power	51v 7kw Lithium under chassis, with Dual Fire Supression System
Power	240V Weather Proof Outlet (Single)
Power	12V Weather Proof 12vlt Socket
Solar Panels	1650w (4x 415w 70v Panels)
Brakeaway	Unit & Switch
Cameras	Front & Rear Camera (2)
Flood Bar Lights	24" Front and Rear Bug Lights

### EXTERNAL

Awning	Electric With Internal buttons, Remote and phone app
Step	Double Pull-Out (Manual)
TV Wall Mount Plate	Inside Fold Down Kitchen Hatch
Counterstrike Kitchen	Fold Down Kitchen under Awning, with Portable 240v Induction Cooktop, hot & cold tap, TV mount
Counterstrike Rear Bar	Drop Down Storage Box, Remote Operated Reverse Light / Rear Work Light
Stone Guard	Incorporated angled Storage Tubs at Front of Van (Counterstrike Front)
Jerry Can Holders	2 x 20Ltr in Counterstrike Rear Bar
Spare Wheel	Single spare mounted underneath
Stabiliser Leg Supports	
Jack	Hydraulic
Jockey Stand	Bos 3 ribbed Battery Drill Operated, with Foot not Wheel

### CHASSIS & SUSPENSION

Suspension	Tuff Ride 3.5t to 3.9t ATM Level 4 Airbag System with OnBoard Compressor & Tank
Wheels	17" Alloy
Tyres	BFG or Mickey Thompson Off-Road M/T
Hitch	D045
Chassis	6" DuraGal
A-Frame	6" DuraGal
Axle	Dual
Brakes	Drum
Mud Flaps	Back & Under Chassis
Rear Recovery Points	Rear Recovery Points

### PROTECTION

Raptor Coating	Front, Sides, Front / Rear Boxes & Chassis
Water tank guards	Sheet Metal
Under Chassis Stone Flaps	Under Chassis Rubber Guard to Protect from Stones

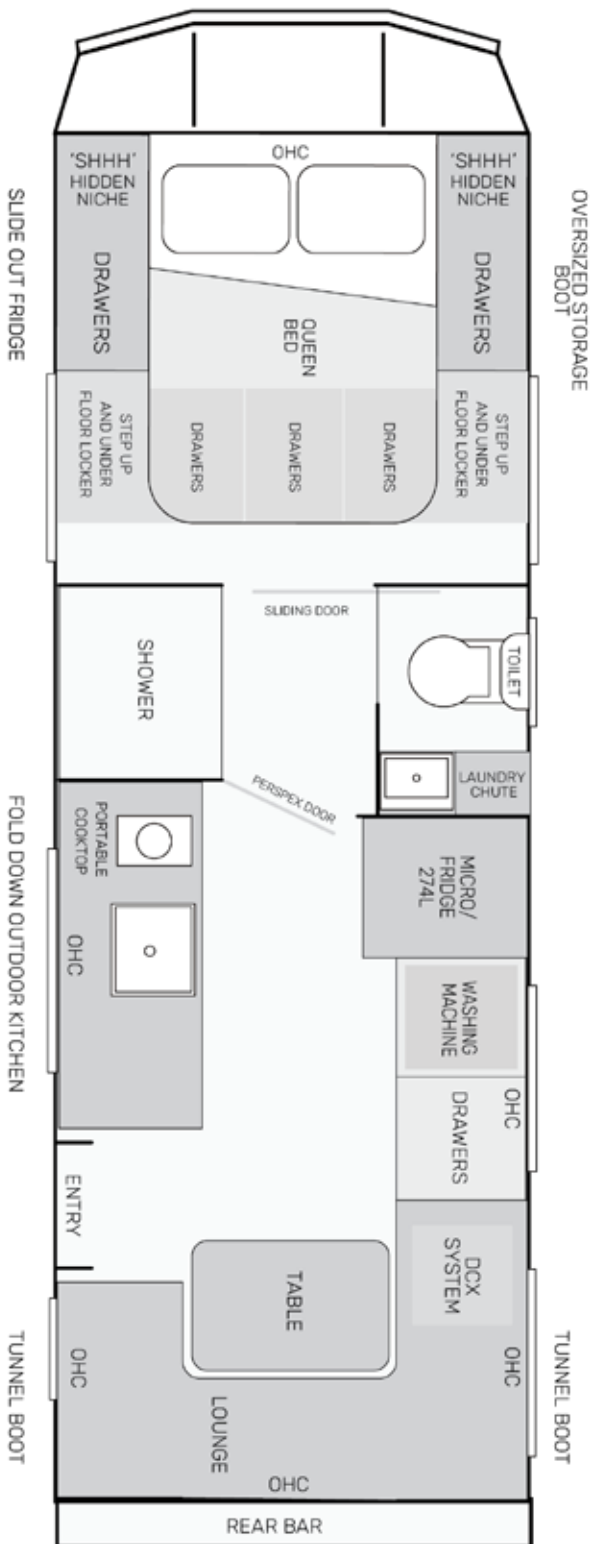
### CONSTRUCTION

Frame, insulation & cladding, flooring	Insulated Composite Panel, Walls, Front, Rear, Roof & Floor
--	---

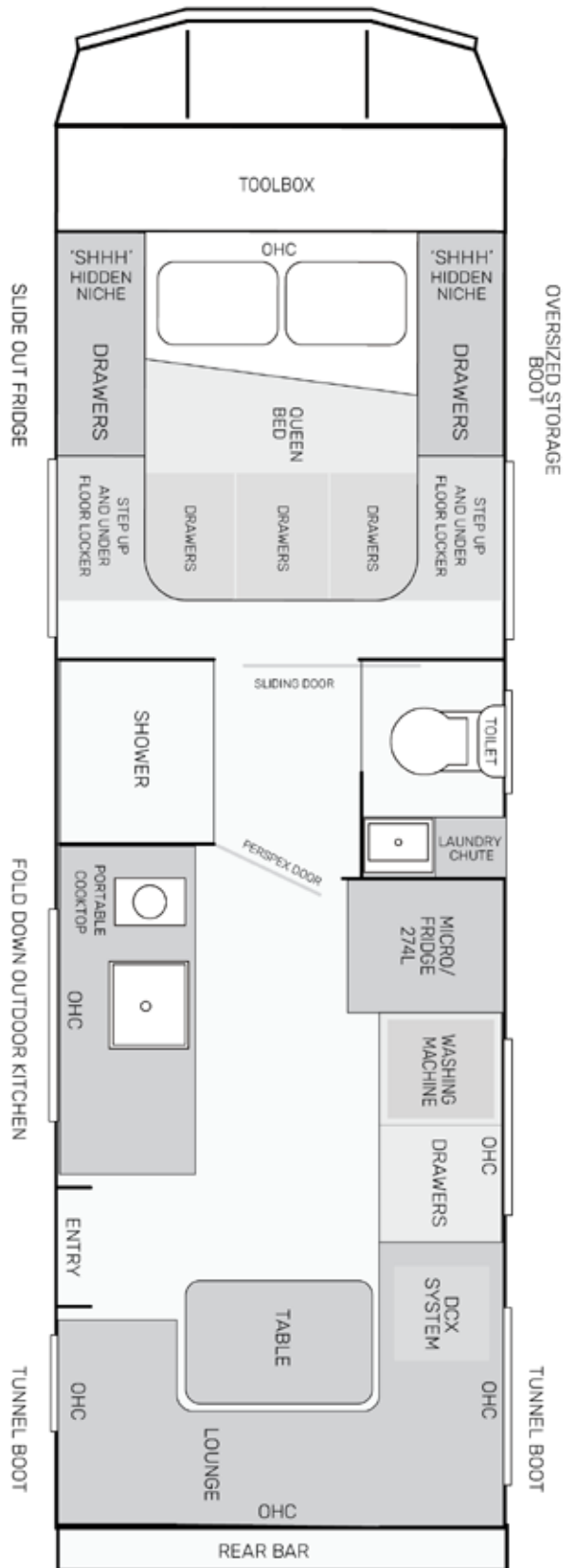
# COUNTERSTRIKE C220

## CLUB LOUNGE FLOORPLAN

STANDARD LAYOUT



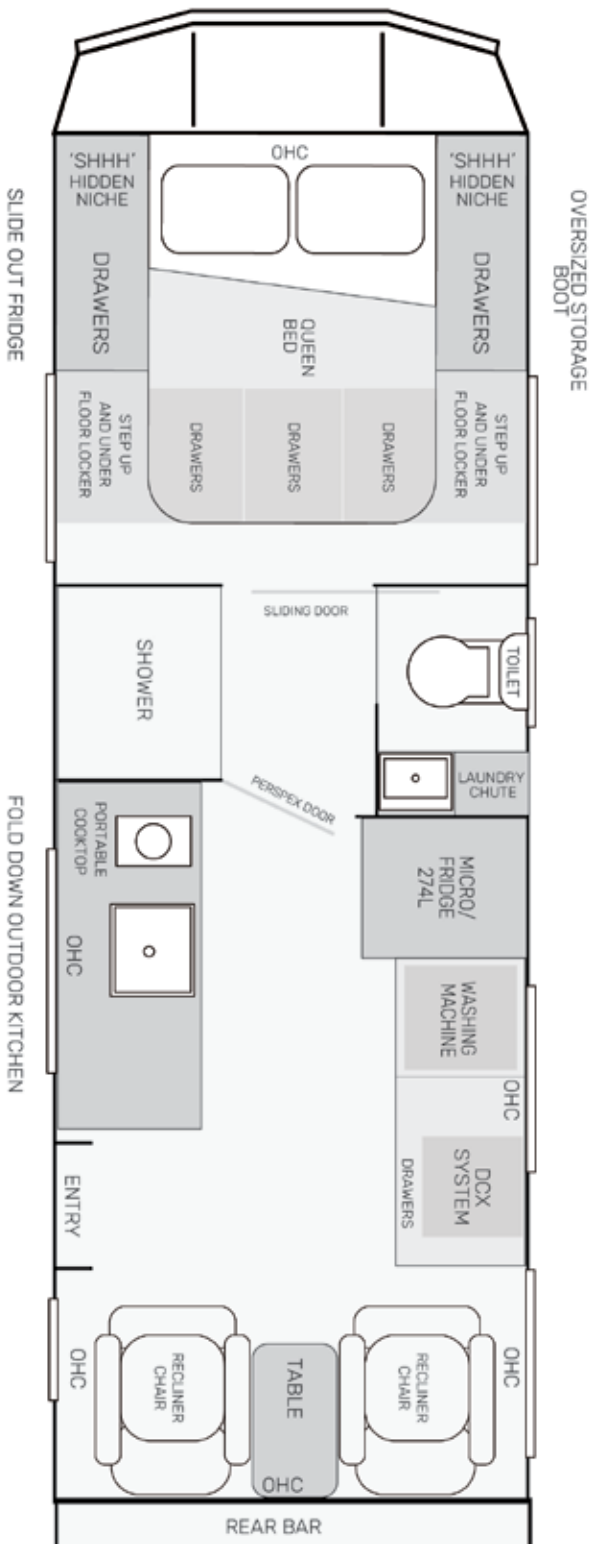
TOOLBOX LAYOUT (OPTIONAL UPGRADE)  
THE VAN WILL BE 350MM LONGER WITH THE TOOLBOX



# COUNTERSTRIKE C220

## RECLINERS FLOORPLAN

STANDARD LAYOUT



TOOLBOX LAYOUT (OPTIONAL UPGRADE)  
THE VAN WILL BE 350MM LONGER WITH THE TOOLBOX

