



# Family Range

where family time travels further

CARAVAN  
**CARAVAN OF THE YEAR 2026**  
PRESENTED BY  
**MSA**  
**JOINT WINNER**



**SLEEPS UP TO 8**  
QUEEN OR KING BED  
BUNK BEDS



**KITCHEN**  
INTERNAL & EXTERNAL  
COOKING



**FRIDGE**  
INDOOR FRIDGE



**FULL ENSUITE**  
SHOWER/ TOILET



**BATTERIES**  
OFF-GRID BATTERIES



**SOLAR**  
MASSIVE SOLAR  
CAPABILITY WITH  
OPTIONAL SLIDE-OUT  
SOLAR PANELS

**Melbourne made.**  
**Australian owned.**



[kokodacaravans.com.au](http://kokodacaravans.com.au) | Call 1800 577 430  
1600 Sydney Rd, Campbellfield VIC 3061



# Family F196

## specs

### Internal Fridge

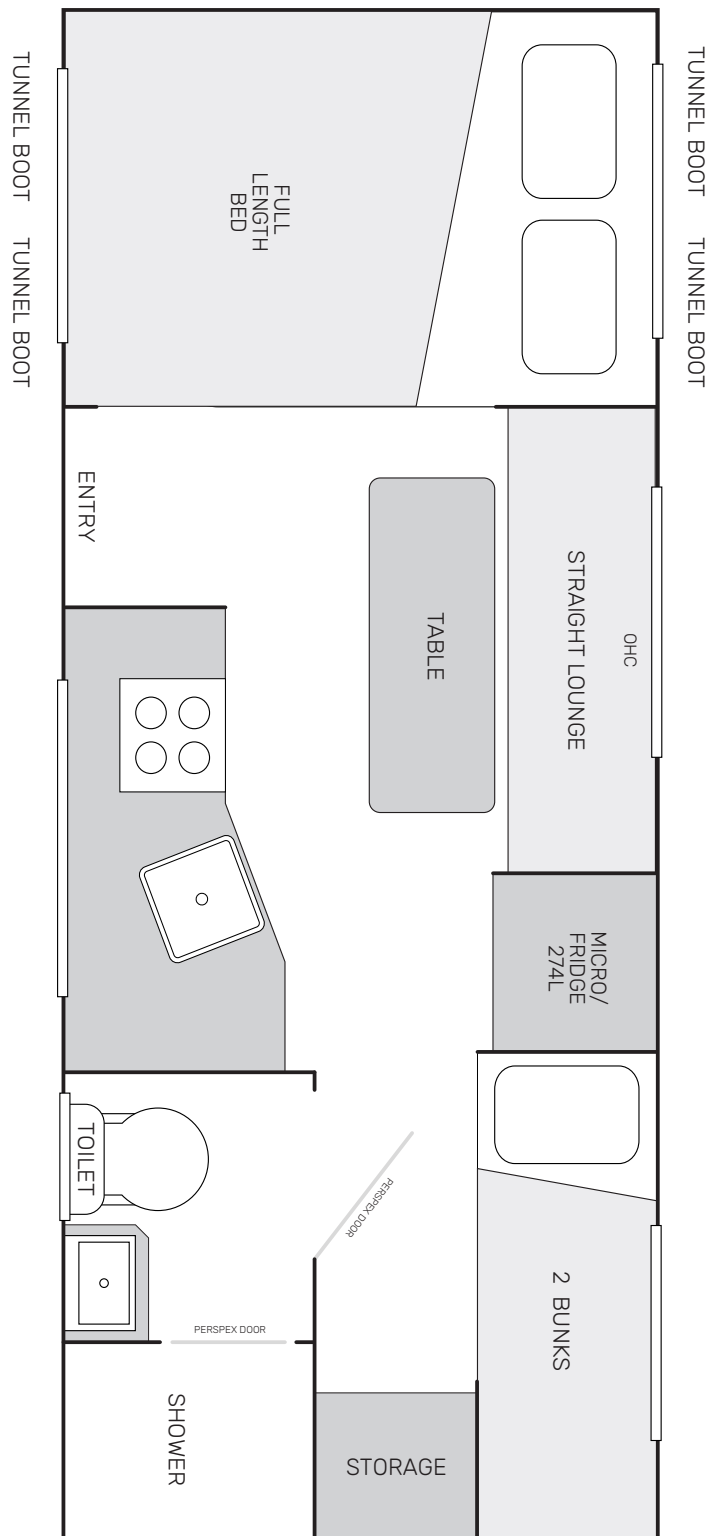
274 Litre Thetford Fridge / Freezer

### Cabin Length

19'6"

### Custom Options

Robe or no robe above the bed



## why choose this layout?

A family caravan layout is designed with togetherness and practicality in mind, ensuring there's space for everyone to relax, sleep, and enjoy the journey. The right layout balances comfort with functionality.

**comfort in every layout.**



# Family F196

## specs

### Internal Fridge

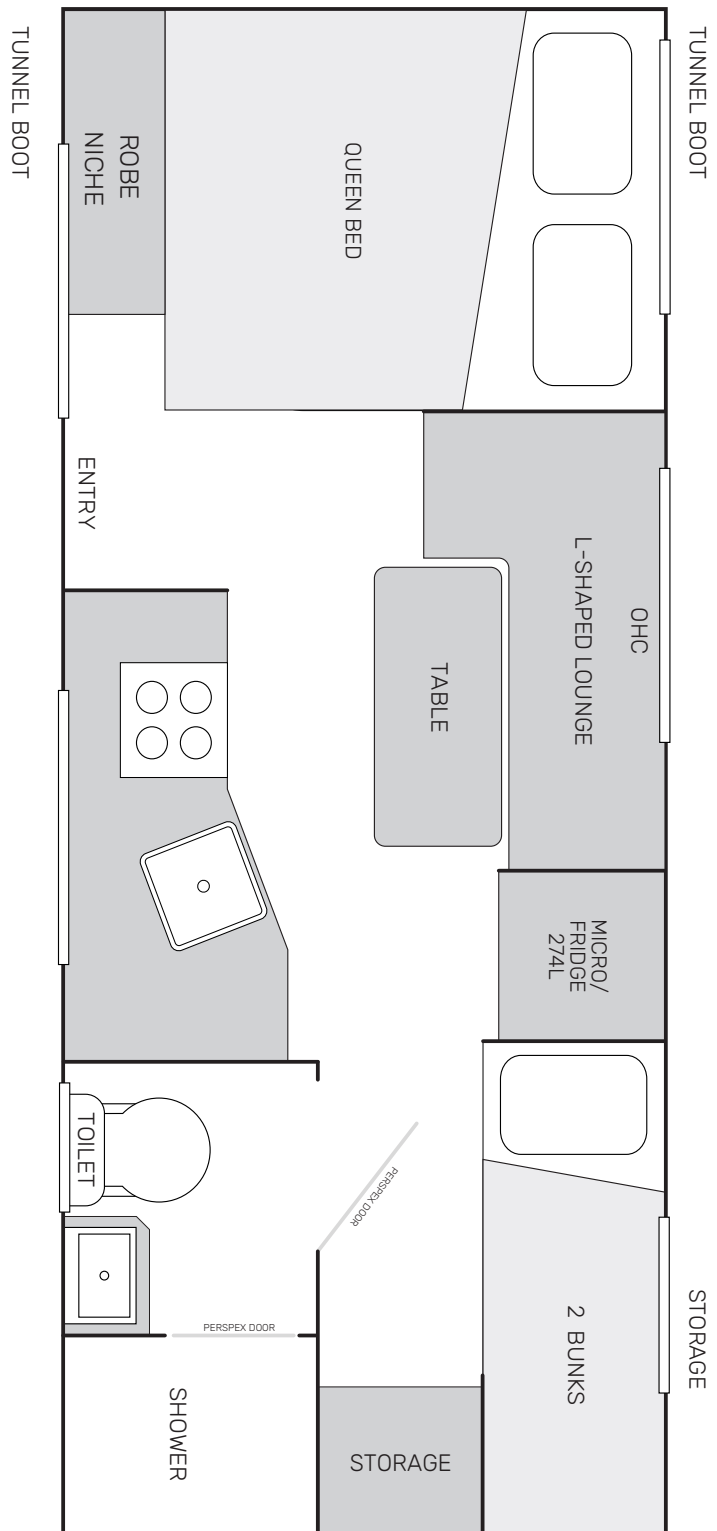
274 Litre Thetford Fridge / Freezer

### Cabin Length

19'6"

### Custom Options

Robe or no robe above the bed



## why choose this layout?

A family caravan layout is designed with togetherness and practicality in mind, ensuring there's space for everyone to relax, sleep, and enjoy the journey. The right layout balances comfort with functionality.

**comfort in every layout.**



# Family F196

## specs

### Internal Fridge

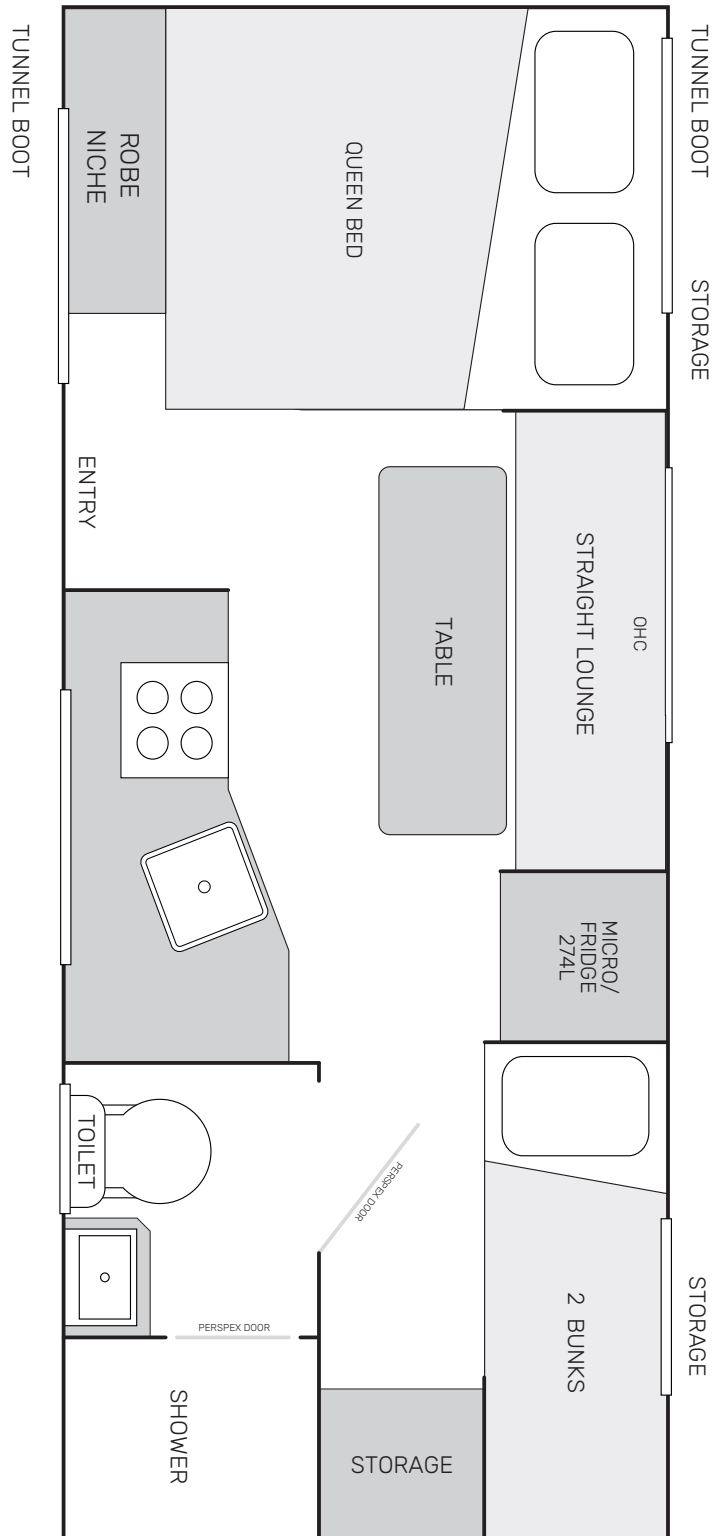
274 Litre Thetford Fridge / Freezer

### Cabin Length

19'6"

### Custom Options

Robe or no robe above the bed



## why choose this layout?

A family caravan layout is designed with togetherness and practicality in mind, ensuring there's space for everyone to relax, sleep, and enjoy the journey. The right layout balances comfort with functionality.

**comfort in every layout.**

Australian made & owned.



# our X-range

## Kokoda: Generator-Less by Design

Other vans are still stuck in the past — framed vans with poor insulation, big vents that leak dust, messy wiring that wastes solar, and power-hungry aircons that force you to run a generator. They're really generator vans, no matter what they bolt onto it.

**Kokoda's X-Ranges are different.** We design the whole system as one — body, insulation, energy, heating, cooling, and storage — so everything works in harmony. The result? A van that feels effortless, no matter how harsh the conditions.



### Better Insulation

Our bonded sandwich panels, and fully insulated hatch doors keep the cabin warm in winter and cool in summer. In the XG range, the cabin is fully gas-free — no gas ventilation cut-outs, no insulation gaps, no dust creeping in. Just quiet, steady comfort.

### Smarter Energy Flow

Shorter, direct cabling means less loss from solar to batteries. What you collect, you keep — making every ray of sunlight count. Airflow and heat extraction around the battery management components, to ensure they run efficiently in the hottest climates.

### Efficient Climate Control

We choose air conditioners that sip power, not gulp it. In the XG range, the ducted split system

uses just 700W an hour — so you can run it longer, sleep cooler, and wake warmer without draining your bank.

### Balanced Energy Sources

Where others rely on just electric or diesel, Kokoda uses all three: Gas for hot water + outdoor cooking (outside the cabin, keeping it gas-free).

Diesel for reliable heating.

Electric (solar + lithium + inverter) for everything inside: aircon, appliances, lighting, comfort.

### The Outcome

With Kokoda, what most people see as endurance — blistering heat, biting cold, or days without sun — becomes simple, quiet, and comfortable. You spend more time off-grid, with less management and far less generator noise.











**That's why we call ours generator-less caravans.**

**Everyone else? They're still making generator vans.**

**pushing boundaries, on and off the road.**

# X-range specs



		XC		XG	
		XC1	XC2	XG1	XG2
energy	 <b>gas</b>	2× 4.5kg gas bottles	2× 4.5kg gas bottles	2× 4.5kg gas bottles	2× 4.5kg gas bottles
	 <b>diesel</b>	5 Litres	5 Litres	5 Litres	5 Litres
	 <b>solar</b>	860w	1290w	1720w	2150w Option: 2580w for vans over 21'
	 <b>battery</b>	400a / 12v	600a / 12v	920a / 12v	1884a / 22kw / 12v (DCX 2× 942a batteries)
	 <b>inverter</b>	3kw inverter	3kw inverter	5kw inverter	5kw inverter
	 <b>battery management</b>	5" Cerbo Screen, Victron Mppts, 100/50 30a DC-DC Charger 120a Charger Resetable Fuses and a Spare provided for any non-resetable fuse	5" Cerbo Screen, Victron Mppt, 2× 100/50 30a DC-DC Charger 120a Charger Resetable Fuses and a Spare provided for any non-resetable fuse	5" Cerbo Screen, Victron Mppt, 3× 100/50 30a DC-DC Charger 120a Charger Resetable Fuses and a Spare provided for any non-resetable fuse	5" Cerbo Screen, Mppt 3× 100/50 (Option 4x) 30a DC-DC Charger 120a Charger Resetable Fuses and a Spare provided for any non-resetable fuse
	 <b>suspension</b>	Teko Independent Coil Spring Suspension	140mm Travel – Teko Tuffride, Auto Ride Height Levelling, Onboard aircompressor and tank with air outlets each side of the van and at the aframe.	230mm Travel – Terraglide TG-X-1, Phone & Onboard Management, Horizon Levelling, Auto Ride Height Levelling, Onboard dual aircompressor and tank with air outlets each side of the van and at the aframe.	230mm Travel – Terraglide TG-X-1, Phone & Onboard Management, Horizon Levelling, Auto Ride Height Levelling, Onboard dual aircompressor and tank with air outlets each side of the van and at the aframe.
	 <b>tool-boxes</b>	Large Dual Slide Toolbox  REAR: Standard rear bar with single spare wheel	Monster Toolbox (Incorporated stone guard and internal gas bottle storage)  REAR: Standard rear bar with single spare wheel	FRONT: XCore Front & Garage  REAR: XCore rear bar with glove box	FRONT: XCore Front & Garage  REAR: XCore rear bar with glove box
	 <b>water</b>	220 Litres of water *2× 110L tanks	220 Litres of water *2× 110L tanks	330 Litres of water *3× 110L tanks	330 Litres of water *3× 110L tanks
	 <b>grey water</b>	40 Litre Portable Tank	40 Litre Portable Tank	40 Litre Portable Tank	90 Litre Fixed

pushing boundaries, on and off the road.